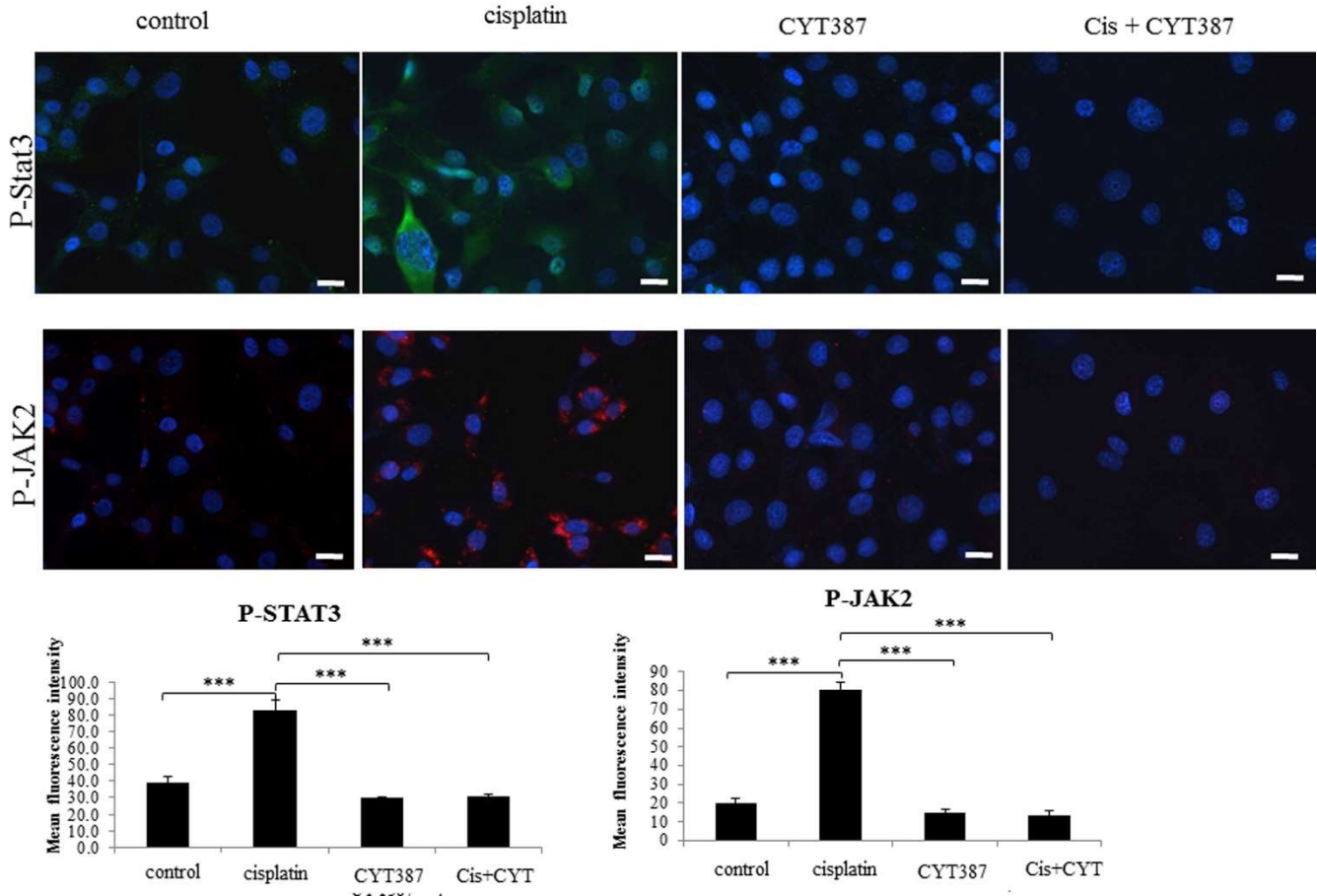
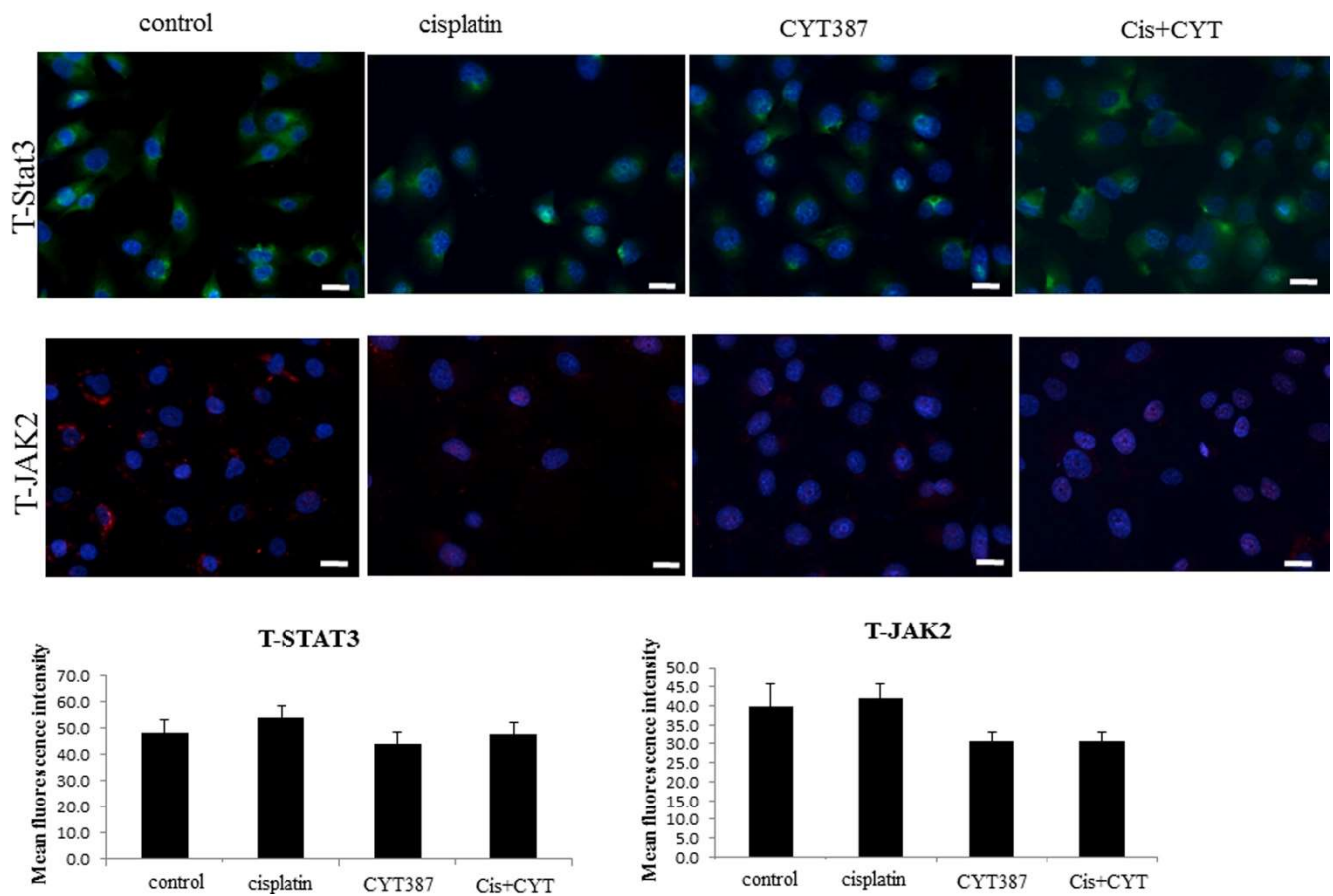


Enhanced activation of STAT3 in ascites-derived recurrent ovarian tumors: inhibition of cisplatin-induced STAT3 activation reduced tumorigenicity of ovarian cancer by a loss of cancer stem cell-like characteristics

Khalid Abubaker, Ardian Latifi, Emily Chan, Rodney B. Luwor, Christopher J. Burns, Erik W. Thompson, Jock K. Findlay, and Nuzhat Ahmed

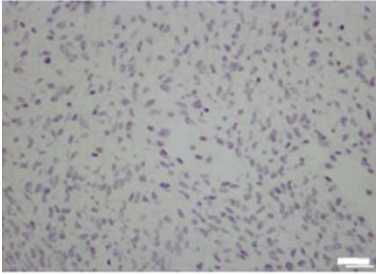


Supplementary Figure 1: Expression and localization of P-JAK2 and P-STAT3 in HEY cells in response to cisplatin treatment. The images were evaluated as described in Figure 1. Images are representative of three independent experiments. The mean fluorescence intensity of P-JAK2 and P-STAT3 were quantified using Cell-R software (Olympus Soft Imaging Solutions). Significant intergroup variations are indicated by *** P < 0.001. Magnification 200x; scale bar = 10 μ M.

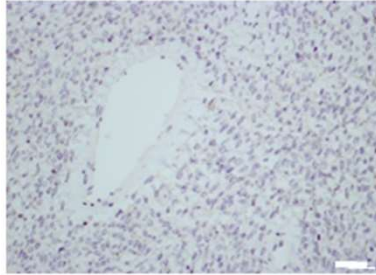


Supplementary Figure 2: Expression and localization of T-JAK2 and T-STAT3 in HEY cells in response to cisplatin treatment. The images were evaluated as described in Figure 1. Images are representative of three independent experiments. The mean fluorescence intensity of T-JAK2 and T-STAT3 was quantified using Cell-R software (Olympus Soft Imaging Solutions). Magnification 200x; scale bar = 10 μ M.

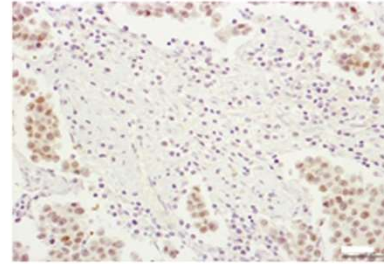
P-JAK2



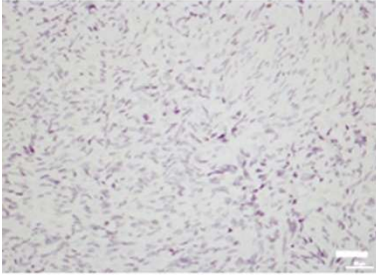
T-JAK2



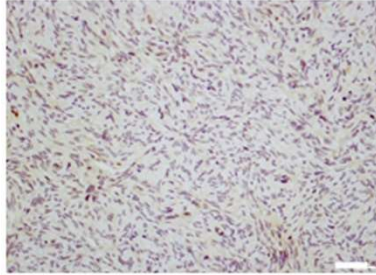
Oct4



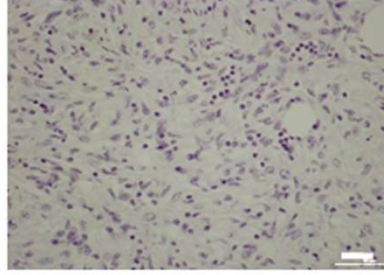
P-STAT3



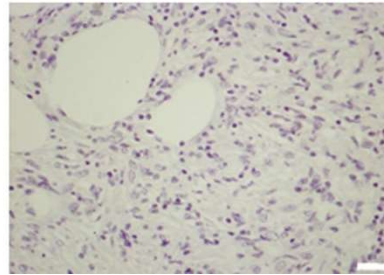
STAT3



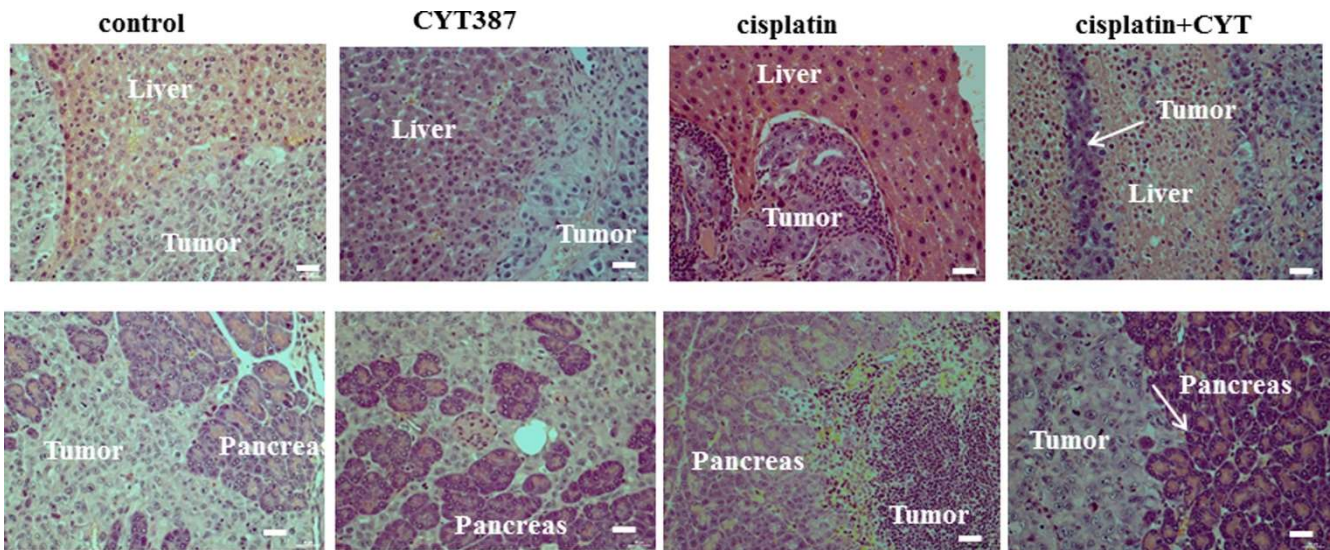
CA125



CD117



Supplementary Figure 3: Negative IgG controls for P-JAK2, T-JAK2, P-STAT3, T-STAT3, Oct4, CD117 and CA125. Tumor sections were stained with IgG control antibodies as described in Methods and Materials. Magnification 200X, scale bar = 10 μ m.



Supplementary Figure 4: H and E staining of control and treated HEY cell derived-tumor associated infiltrated organs in mice. 5×10^6 cells were injected ip in each mouse. Histological images of liver and pancreas showing infiltration of control, cisplatin-treated, CYT387 and combination of cisplatin and CYT387-treated (Cis+CYT) HEY cells. Arrows indicate tumor cells invading the respective organs. Magnification 200X, scale bar = 10 μ m.