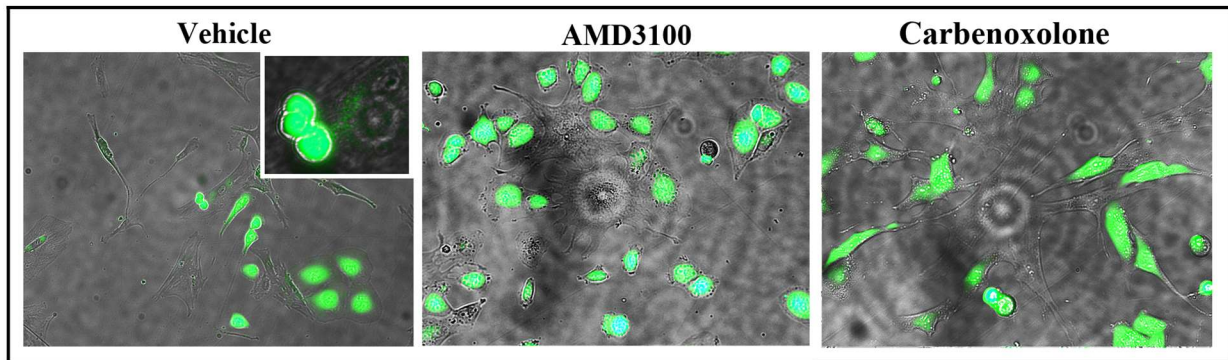
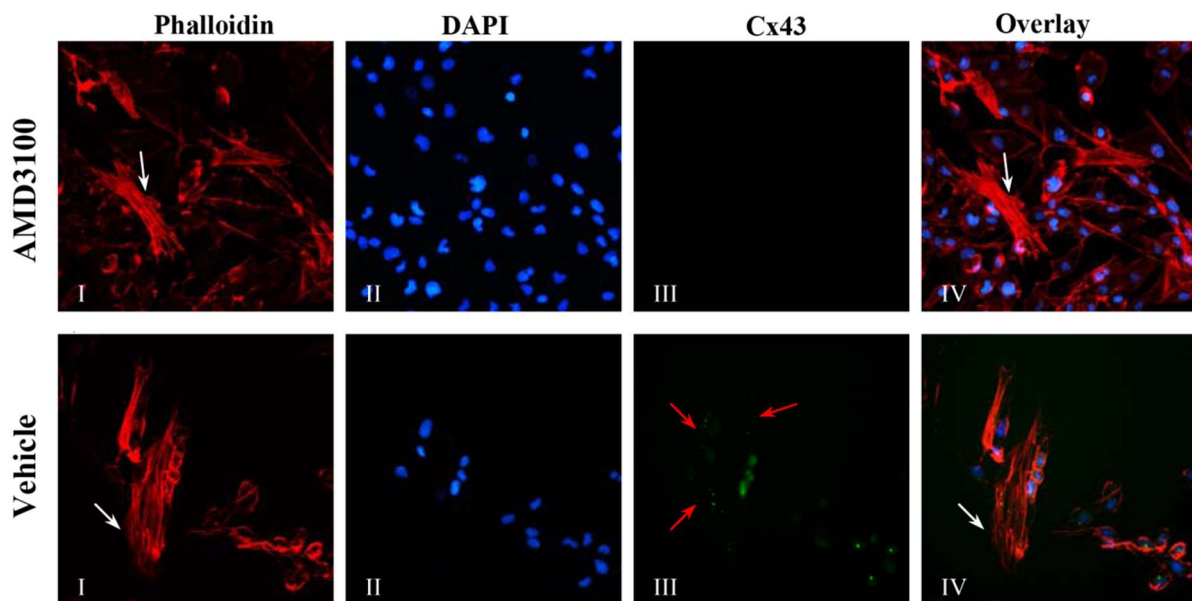


Treg/Th17 polarization by distinct subsets of breast cancer cells is dictated by the interaction with mesenchymal stem cells.

Shyam A. Patel, Meneka A. Dave, Sarah A. Bliss, Agata B. Giec-Ujda, Margarette Bryan, Lillian F. Pliner, and Pranela Rameshwar



**Figure S1: Images of AMD3100 treated co-cultures of CSCs and MSCs.** CSCs were labeled with CFDA and then co-cultured with MSCs, with vehicle, 100 ng/mL of AMD3100 and 100, 200 and 300  $\mu$ M of carbenoxolone. The transfer of CFDA is shown after 48 h. The inset within the image for vehicle treatment shows the transfer of dye to MSCs. The effect carbenoxolone is represented with 200  $\mu$ M of carbenoxolone.



**Figure S2: Blunting effect of AMD3100 on Cx43 expression in co-cultures of BC-ICs and MSCs.** Co-cultures of CSCs and MSCs were established in the presence of 100 ng/mL of AMD3100 or vehicle. After 48 h, the cells were labeled for Cx43 (green) and then counterstained with phalloidin(red) and DAPI (blue). **Dotted** green fluorescence pointed with red arrows indicates label for Cx43 (vehicle, III). The corresponding cultures with AMD3100 lacked green fluorescence (Top panel/III), indicating a decrease in Cx43. White arrows show the close location of CSCs and MSCs. The images (200x) were overlaid in IV.